



How to Connect Your Device to NovoPro

Thank-you for choosing Ceili's to host your event. For your convenience we have provided you with NovoPro; a wireless presentation system that allows you to conveniently screen share with your meeting participants. Find out how to connect the NovoPro system to your specific device below.

CONNECTION INFORMATION GUIDE

The Connection Information Guide referred to in the following directions, can be found in the upper right hand corner of the TV screen. This will provide you with the Wi-Fi (IP Address) for the room you are in as well as the required PIN/AirPlay Password you may be prompted to enter.

Pin/AirPlay Password → PIN 7232 (AirPlay Password)

Wi-Fi (IP Address). → 192.168.43.1

Ceilis Red Room
Hotspot Mode

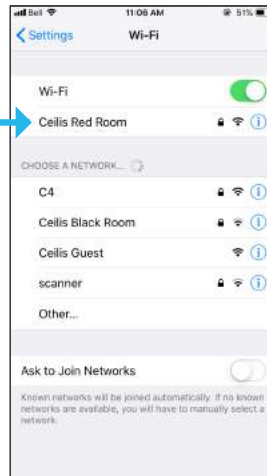
This boardroom presentation system was installed by Digital Lifestyles.



APPLE PHONE/TABLET

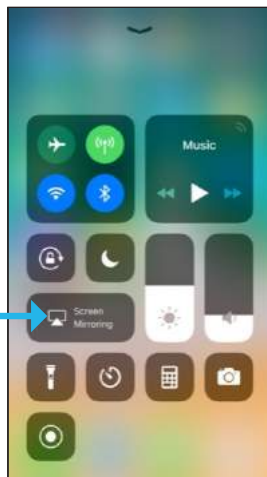
1. Go to your Settings.
2. Select Wi-Fi.
3. Click on the WiFi Connection (IP Address) of the room you are in (Ceili's Red Room, Ceili's Black Room, Ceili's East Stage); this is noted on the Connection Information Guide found in the upper right hand corner of the TV screen.

Select Wi-Fi



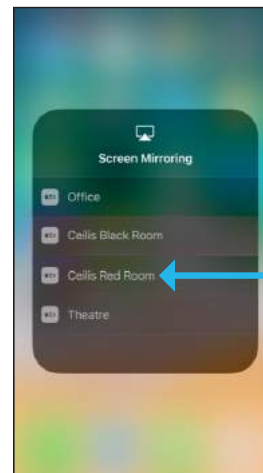
4. Swipe up on your device and select Screen Mirroring.

Select Screen Mirroring



5. Screen mirroring will show the available devices. Select the TV you are using in the room you are in (Ceili's Red Room, Ceili's Black Room, Ceili's East Stage TV).

Select Your Room's TV



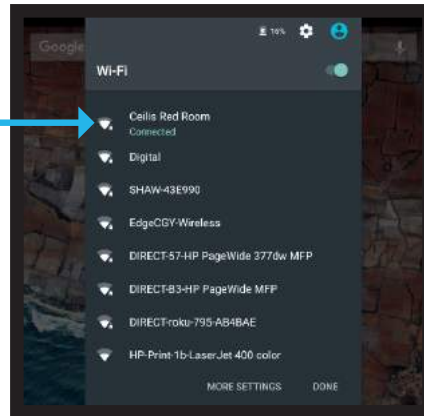
6. Enter the AirPlay Password (this is the 4 digit PIN/AirPlay Password found on the Connection Information Guide).
7. You will now be connected to the NovoPro system and will be screen sharing.
8. To disconnect from the NovoPro system, swipe up on your device, select Screen Mirroring and select Stop Mirroring.



ANDROID/PHONE TABLET

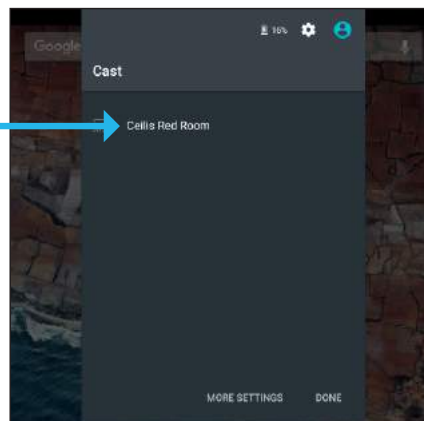
1. Go to your Settings.
2. Select Wi-Fi.
3. Click on the WiFi Connection (IP Address) of the room you are in (Ceili's Red Room, Ceili's Black Room, Ceili's East Stage); this is noted on the Connection Information Guide found in the upper right hand corner of the TV screen.

Select Wi-Fi



4. Swipe down twice on your device to expose your full menu (this action may be slightly different depending on your Android operating system) and select the Smart View App which is pre-installed on most Android devices.
5. The Smart View App will show the available TVs. Select the TV you are using in the room you are in (Ceili's Red Room, Ceili's Black Room, Ceili's East Stage).

**Select Your
Room's TV**



6. Enter the AirPlay Password (this is the 4 digit PIN/AirPlay Password found on the Connection Information Guide).
7. You will now be connected to the NovoPro system and will be screen sharing.
8. To disconnect from the NovoPro system, swipe down twice on your device to expose the full menu, select the Smart View App and it will automatically disconnect.

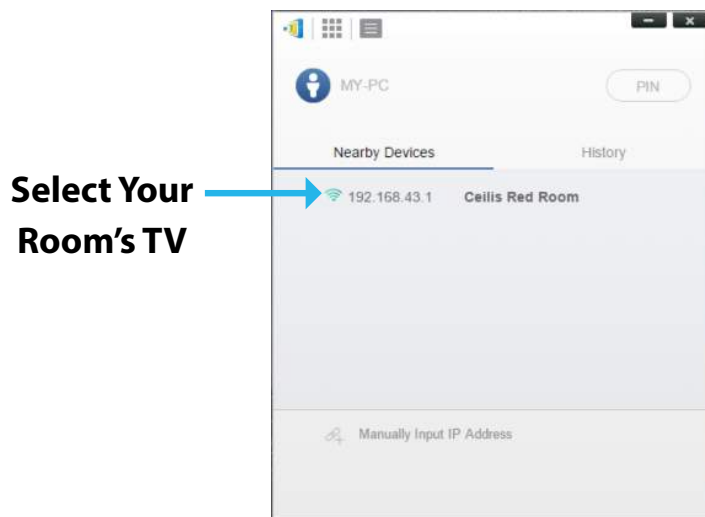


PC

There are two ways to connect the NovoPro System to your PC; connect by downloading the software or if you do not have administration privileges on your laptop to download and execute software, see Ceili's management and use the supplied Vivitek Launcher (Dongle).

Software

1. Click on the WiFi icon located at the bottom right of your PC screen.
2. Click on the WiFi Connection (IP Address) of the room you are in (Ceili's Red Room, Ceili's Black Room, Ceili's East Stage); this is noted on the Connection Information Guide found in the upper right hand corner of the TV screen.
3. Download the software here: <https://novoconnect.eu/knowledge/software/>
4. Click on Novo Desktop Streamer icon to launch the software.
5. Select the TV you are using in the room you are in (Ceili's Red Room, Ceili's Black Room, Ceili's East Stage) on the Nearby Devices screen.



6. To disconnect, click on the active NovoPro Desktop streamer icon and click disconnect.

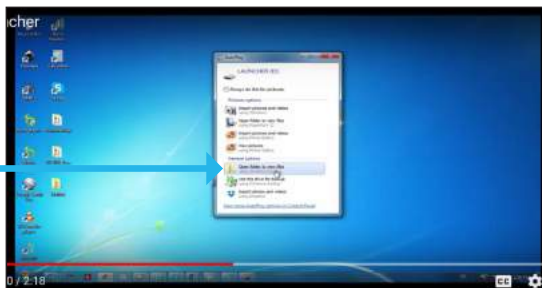
VIVITEK LAUNCHER (DONGLE)



Press the centre button to connect and disconnect.

1. Plug the Vivitek Launcher into the USB port on your computer and it will automatically be recognized. No driver or software installation is required from you. After plugging in the launcher for the very first time, your computer will register your USB device onto the system.

2. Click on Open folder to view files.



Click Open Folder

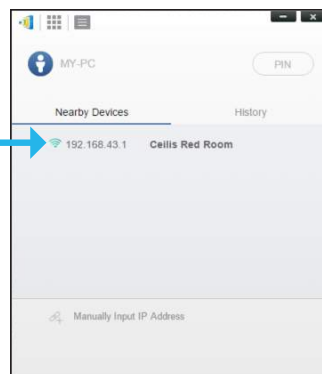
3. Once you see the indication that your device is ready to use, you will find the launcher listed as a flash drive. Simply open the new drive folder and click on the program Novo Launcher.

Click Novo Launcher

Name	Date modified	Type	Size
app	2018-09-06 9:40 AM	File folder	
AppIcon.ico	2018-09-27 4:34 AM	IconView (ICO) File	362 KB
dsc.ini	2018-09-27 4:34 AM	Configuration settings	1 KB
Novo Launcher.exe	2018-09-27 4:34 AM	Application	471 KB
quick-to.bat	2018-09-27 4:34 AM	Windows Batch File	1 KB
Readme.txt	2018-09-27 4:34 AM	Text Document	2 KB
uninst.exe	2018-09-06 9:40 AM	Application	441 KB

4. Select the TV you are using in the room you are in (Ceili's Red Room, Ceili's Black Room, Ceili's East Stage) on the Nearby Devices screen.

Select Your Room's TV



5. Press centre button of the Vivitek Launcher labelled LauncherPlus to connect.
6. You will now be connected to the NovoPro system and will be screen sharing.
7. Press centre button of the Vivitek Launcher labelled LauncherPlus to disconnect.

MAC

1. Click on the WiFi icon located at the bottom right of your Mac screen.
2. Click on the WiFi Connection (IP Address) of the room you are in (Ceili's Red Room, Ceili's Black Room, Ceili's East Stage); this is noted on the Connection Information Guide found in the upper right hand corner of the presentation screen.
3. Click on the Screen Sharing Icon on your MacBook.
4. Select the TV you are using in the room you are in (Ceili's Red Room, Ceili's Black Room, Ceili's East Stage).



5. Enter the AirPlay Password (this is the 4 digit PIN/AirPlay Password found on the Connection Information Guide).
6. To disconnect, click on the Screen Sharing Icon and select Stop Screen Sharing.